

# CASSIA



matlin

Product by  
**sarom**™  
combinations unexpected

matlin

CASSIA



102



107



101



156



103



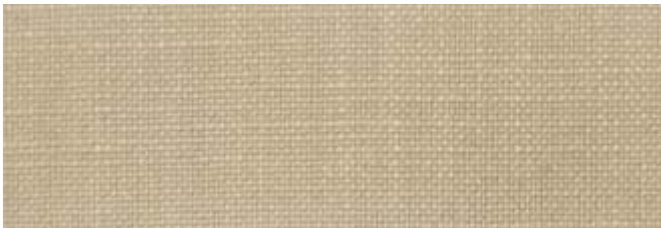
109



105



110



108



111



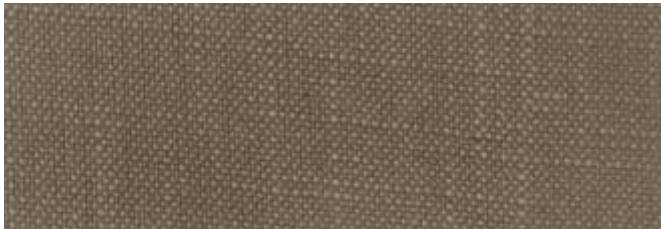
112



116



115



117



113



118



114



119

matlin

CASSIA



106



128



126



127



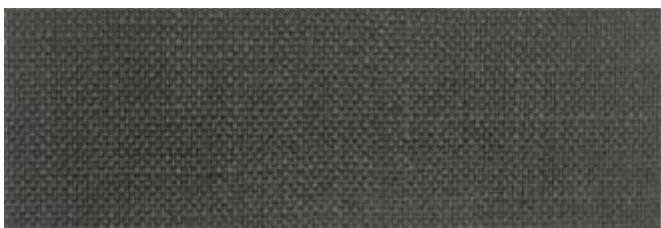
125



124



123



122



120



121



137



136



138



135



134



131



133



130



129

# matlin

# CASSIA



132



146



141



145



143



144



142



151



140



150



139



152



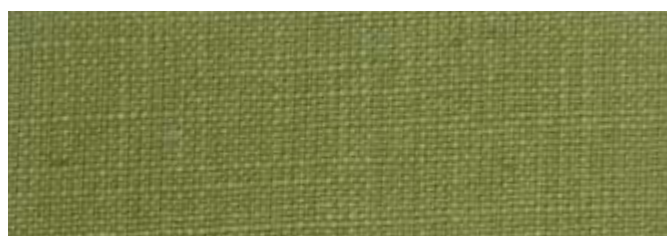
148



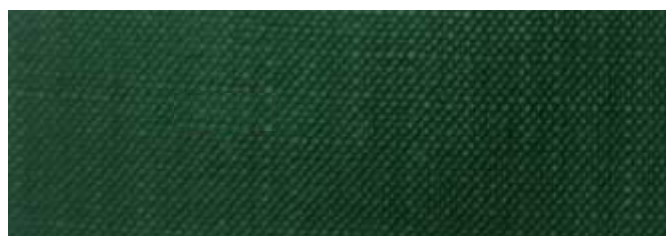
153



147



154



149



155

matlin

CASSIA



104



170



161



162



160



164



165



163



166



169



167



168



171



172



173



175



174



157



158



159



# CASSIA

DESIGN	WIDTH	GSM	V-REPEAT	H-REPEAT	COMPOSITION	COLOUR FASTNESS TO LIGHT	MARTINDALE	WASHING INSTRUCTION	END USE
CASSIA	140 CM	300	NA	NA	50% CO, 35% VI, 15% LI	4	30,000		
<b>WASHING INSTRUCTION</b>						<b>END USE</b>			
Don't Tumble               2 Dots Iron               Wash at 40 Degree Don't Bleach               Hang Dry               Dry clean						Upholstery               Loose Cushion               Curtain			

Wash care instructions need to be followed for prolonged usage of fabric, otherwise will damage the fabric. Test results were gathered from various samples and therefore represent average indicative values. Discolouration caused by clothing fabrics such as jeans does not represent a material defect. Minor colour deviations & discolouring in context of permissible industrial tolerance standards.

**matlin**

Color May Vary From Batch To Batch  
Complementary Sample, Not For Sale



Product by

**sarom**™

combinations unexpected

www.sarom.co.in

www.sarom.info

/saromfab

**Product Color May Slightly Vary From Original Due To Photographic Lighting Sources Or Your Screen Settings.**

# CASSIA



matlin

# CASSIA



matlin