

sarom ™  
combinations unexpected



**LUXOR**  
PLAIN VELVET FABRIC



LUXOR | 901



LUXOR | 903



LUXOR | 902



LUXOR | 904



LUXOR | 908



LUXOR | 905



LUXOR | 910



LUXOR | 906



LUXOR | 909



LUXOR | 907





LUXOR | 926



LUXOR | 917



LUXOR | 923



LUXOR | 918



LUXOR | 925



LUXOR | 919



LUXOR | 924



LUXOR | 920



LUXOR | 921



LUXOR | 922



LUXOR | 916



LUXOR | 927



LUXOR | 915



LUXOR | 928



LUXOR | 912



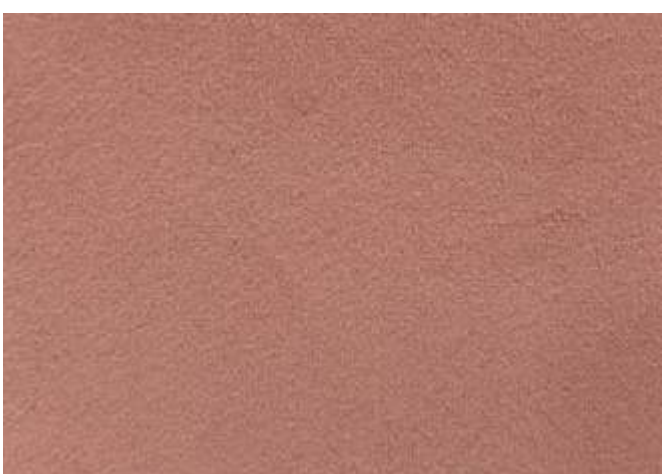
LUXOR | 929



LUXOR | 913



LUXOR | 930

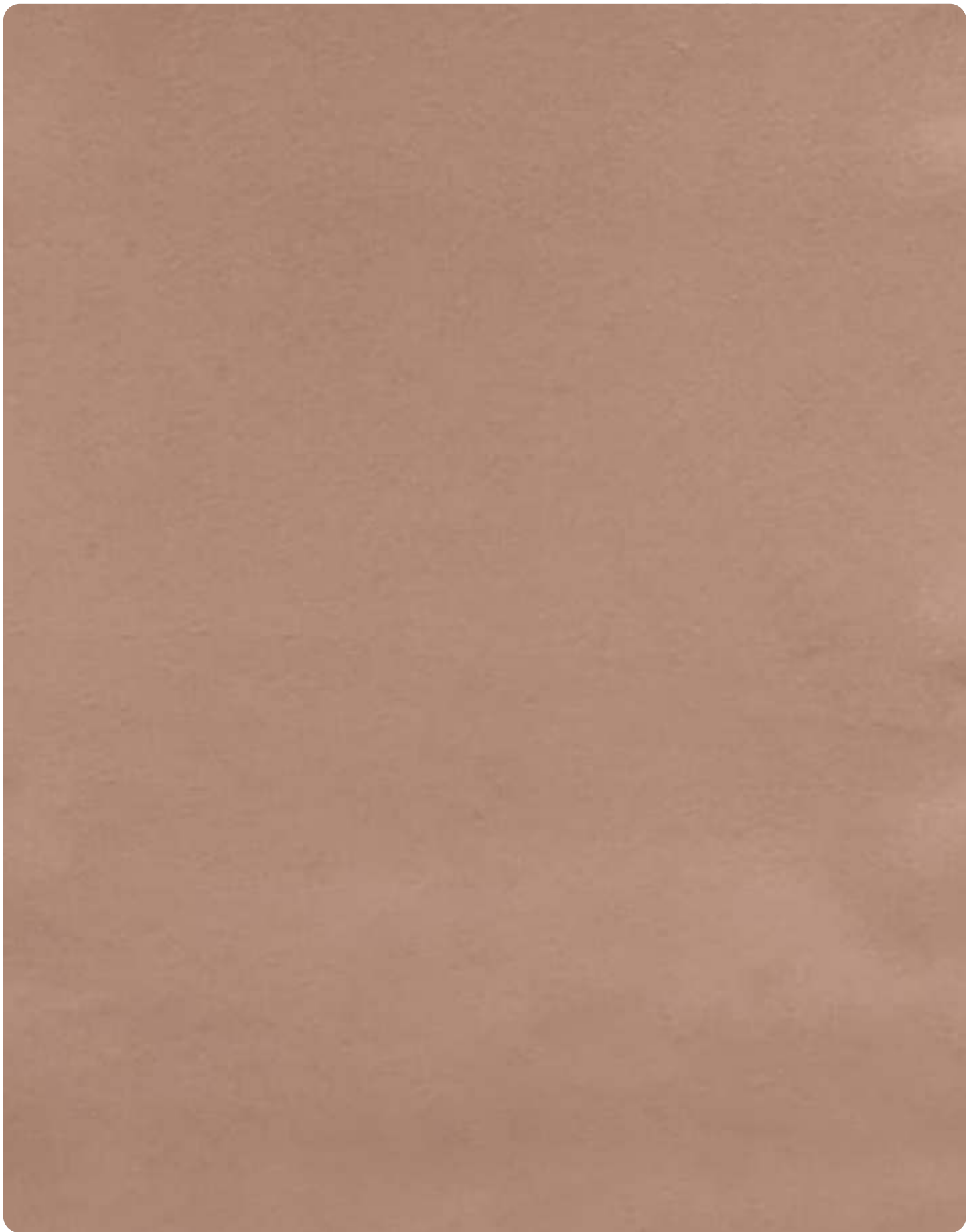


LUXOR | 914







LUXOR | 911





# LUXOR

DESIGN	WIDTH	GSM	COMPOSITION	MARTINDALE	COLOUR FASTNESS TO LIGHT	WASHING INSTRUCTION	END USE
LUXOR	140 CM	300	100% POLYESTER	40,000	4	Ⓟ	 
WASHING INSTRUCTION					END USE		
Ⓟ Dry clean					 Upholstery  Loose Cushion <small>Color May Vary From To Batch   Complementary Sample, Not For Sale</small>		

Wash care instructions need to be followed for prolonged usage of fabric, otherwise will damage the fabric. Test results were gathered from various samples and therefore represent average indicative values. Discolouration caused by clothing fabrics such as jeans does not represent a material defect. Minor colour deviations & discolouring in context of permissible industrial tolerance standards.

MADE IN INDIA

SJ



sarom™  
combinations unexpected

  /saromfab

sarom ™  
combinations unexpected



**LUXOR**  
PLAIN VELVET FABRIC