

SOFFICE



Easy-to-Clean
Fabric

sarom plus



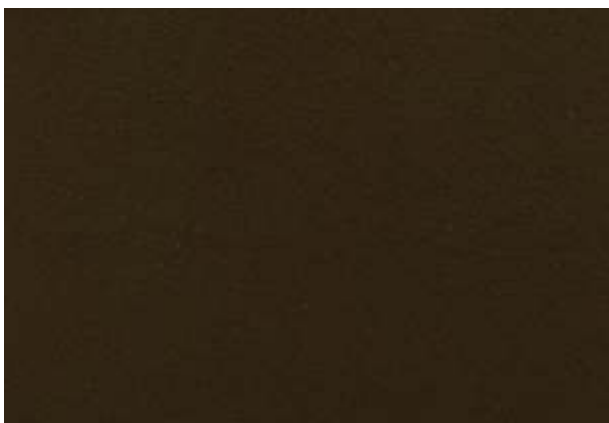
SOFFICE | 902



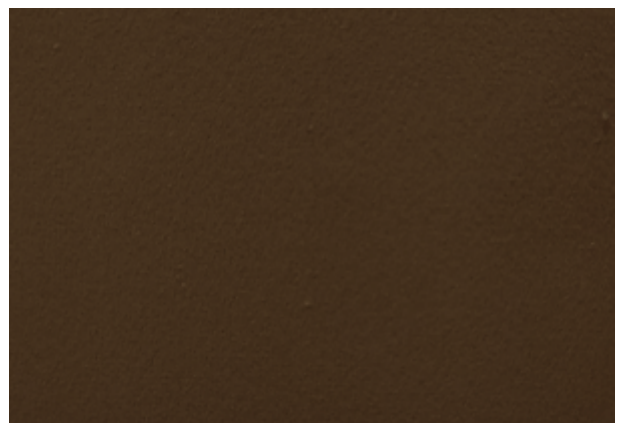
SOFFICE | 903



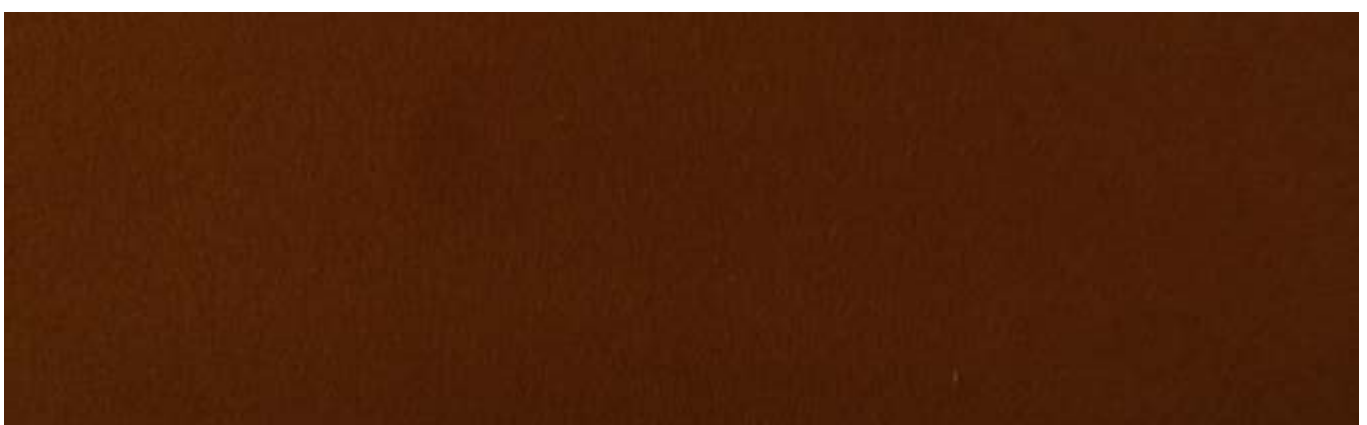
SOFFICE | 904



SOFFICE | 906



SOFFICE | 905



SOFFICE | 907



SOFFICE | 909



SOFFICE | 908



SOFFICE | 921



SOFFICE | 920



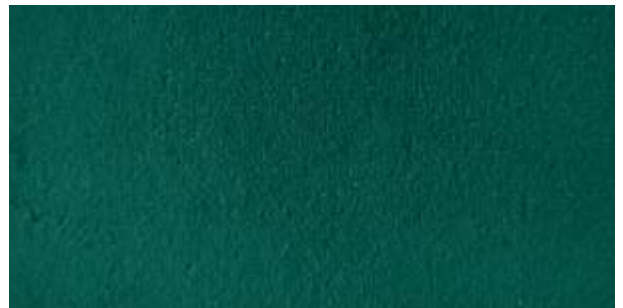
SOFFICE | 919



SOFFICE | 913



SOFFICE | 918



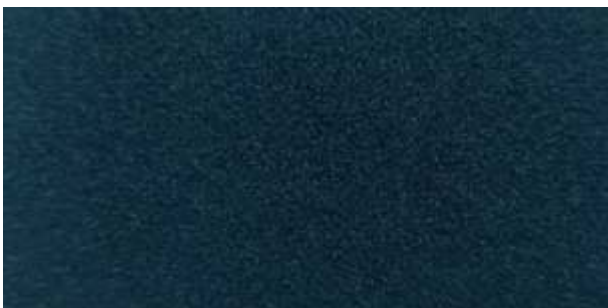
SOFFICE | 912



SOFFICE | 915



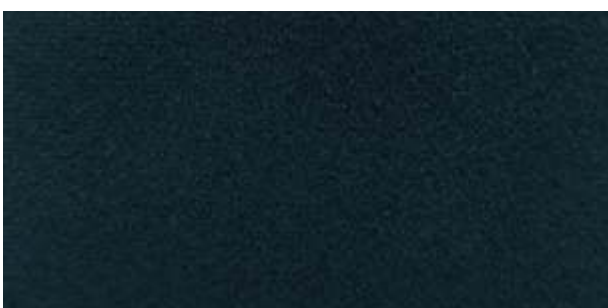
SOFFICE | 910



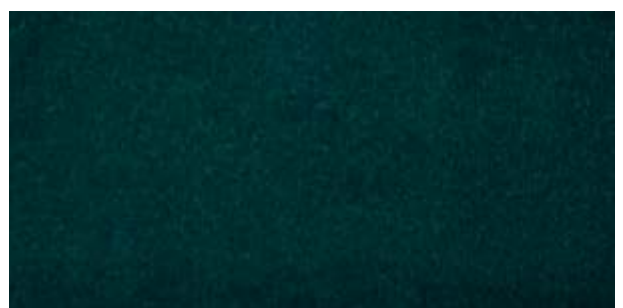
SOFFICE | 917



SOFFICE | 911



SOFFICE | 916



SOFFICE | 914



SOFFICE | 922



SOFFICE | 927



SOFFICE | 923



SOFFICE | 926



SOFFICE | 924



SOFFICE | 928



SOFFICE | 925



SOFFICE | 929



SOFFICE | 930



SOFFICE

DESIGN	WIDTH	GSM	COMPOSITION	COLOR FASTNESS TO LIGHT	MARTINDALE	WASHING INSTRUCTION	END USE
SOFFICE	140 CM	380	100% POLYESTER	4	25000		

Easy-to-Clean

Methods to remove stain easily: →

1.



2.



3.



4.



Take a towel (preferred white color) and make it wet with water, also wet the fabric stain area. Please don't put too much water on the fabric. After 20 seconds, squeeze out the towel and rub the stain in circular motion. It is very important to use the correct way to clean the fabric. Once the stain is removed, allow the fabric to dry naturally. When you try to remove the stains, please don't use too much pressure. Don't allow the stain to dry, then it will be difficult to remove. If the way of cleaning is not correct, it is also difficult to remove all stains.

Below stains can be removed with Easy-to-Clean fabric.

Edible oil | Ball pen (not alcoholic) | Marker pen | Cola | Red Wine | Milk | Coffee | Tea | Juice | Blood | Soy Sauce | Vinegar | Ketchup | Honey | Chocolate cream | Mustard Lipstick | Fountain Pens.

Wash care instructions need to be followed for prolonged usage of fabric, otherwise will damage the fabric. Test results were gathered from various samples and therefore represent average indicative values. Discolouration caused by clothing fabrics such as jeans does not represent a material defect. Minor colour deviations & discolouring in context of permissible industrial tolerance standards.

Product Color May Slightly Vary From Original Due To Photographic Lighting Sources Or Your Screen Settings.

SOFFICE



sarom plus