

VELUR



sarom plus



KOVALAM -101



MORJIM-706



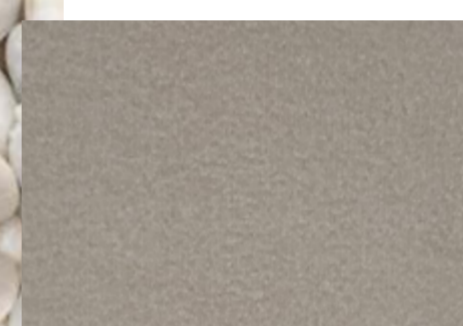
CHERAI -701



AROSSIP -101



MARINA - 901



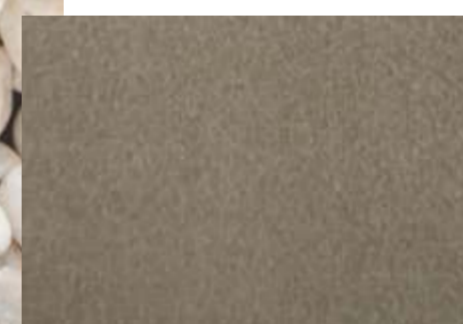
TIFFANY - 900



LENKA - 703



LENKA - 701



TIFFANY -902

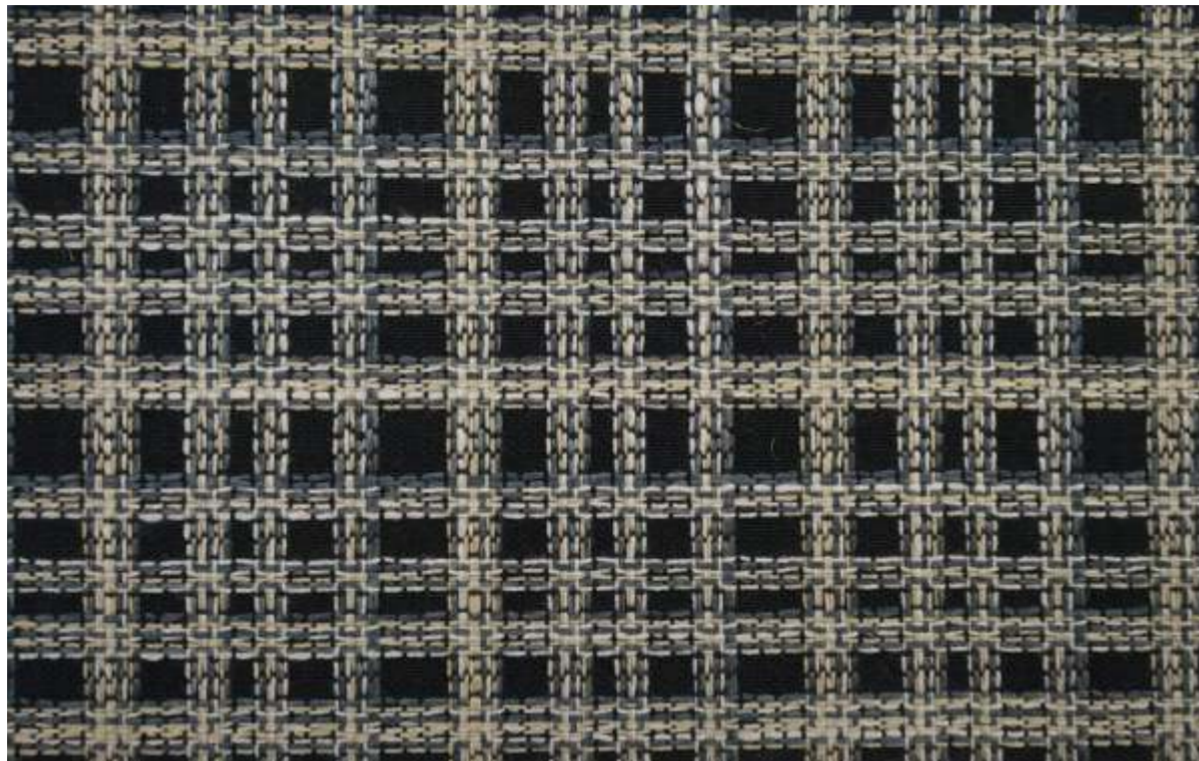


ASABA - 703



MORJIM - 701





KOVALAM -102



MARINA - 902



CHERAI - 702



ASABA 729



TIFFANY - 936



ORLANDO - 116



EUPHORIA - 710



TIFFANY - 929



BRONX - 911

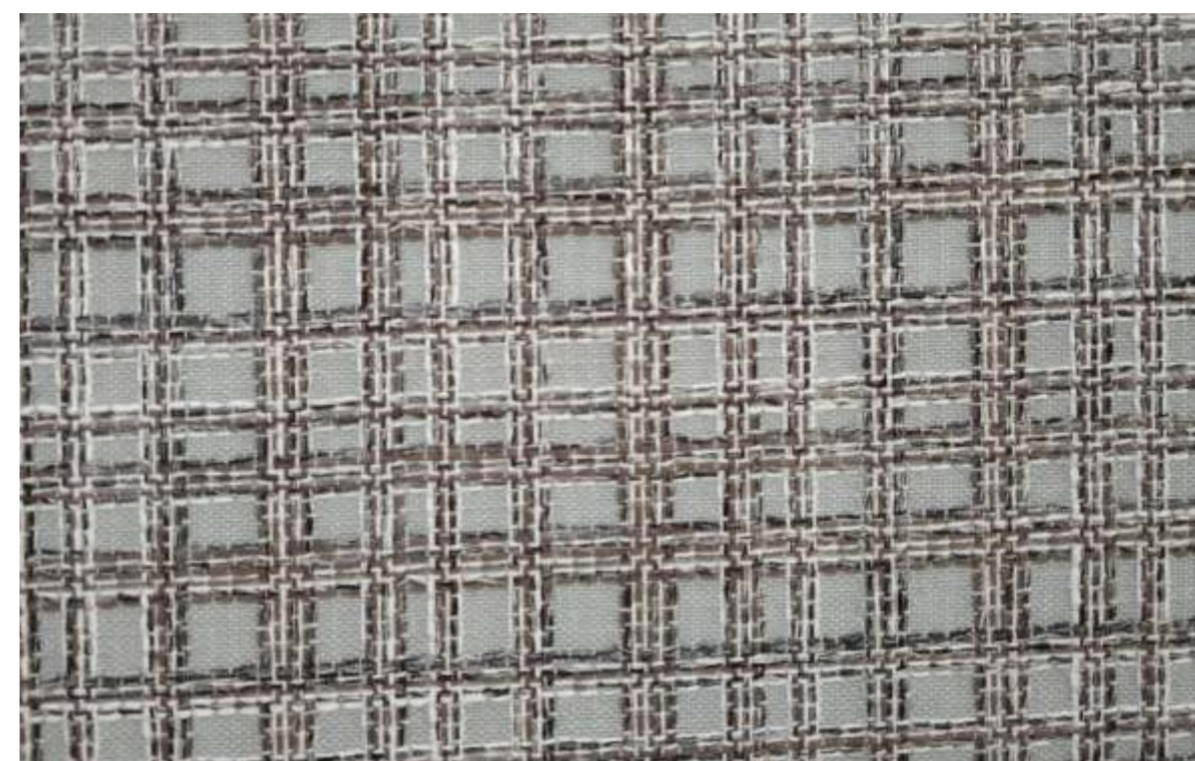


MORJIM - 702





MARINA - 903



KOVALAM - 103



ASABA - 724



ASABA - 727



SOFFICE - 927



TIFFANY - 926



TIFFANY - 932



CHERAI - 703



AROSSIM - 102



AROSSIM - 103





MORJIM - 705



CHERAI - 705



LENKA - 718



EUPHORIA - 708



ASABA - 720



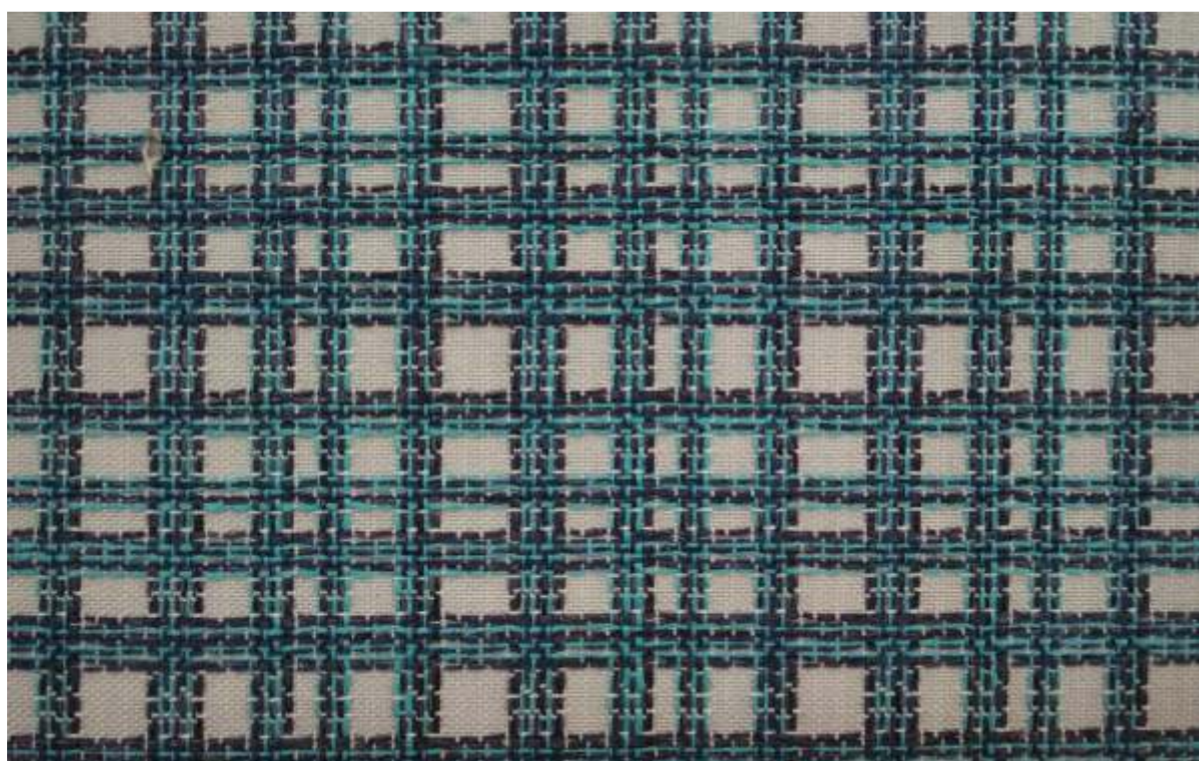
TIFFANY - 918



TIFFANY - 921



ORACLE - 710



KOVALAM - 106



MARINA - 906





KOVALAM - 104



MARINA - 904



LENKA - 716



TIFFANY - 915



SOFFICE - 920



TIFFANY - 924



AROSSIM - 104

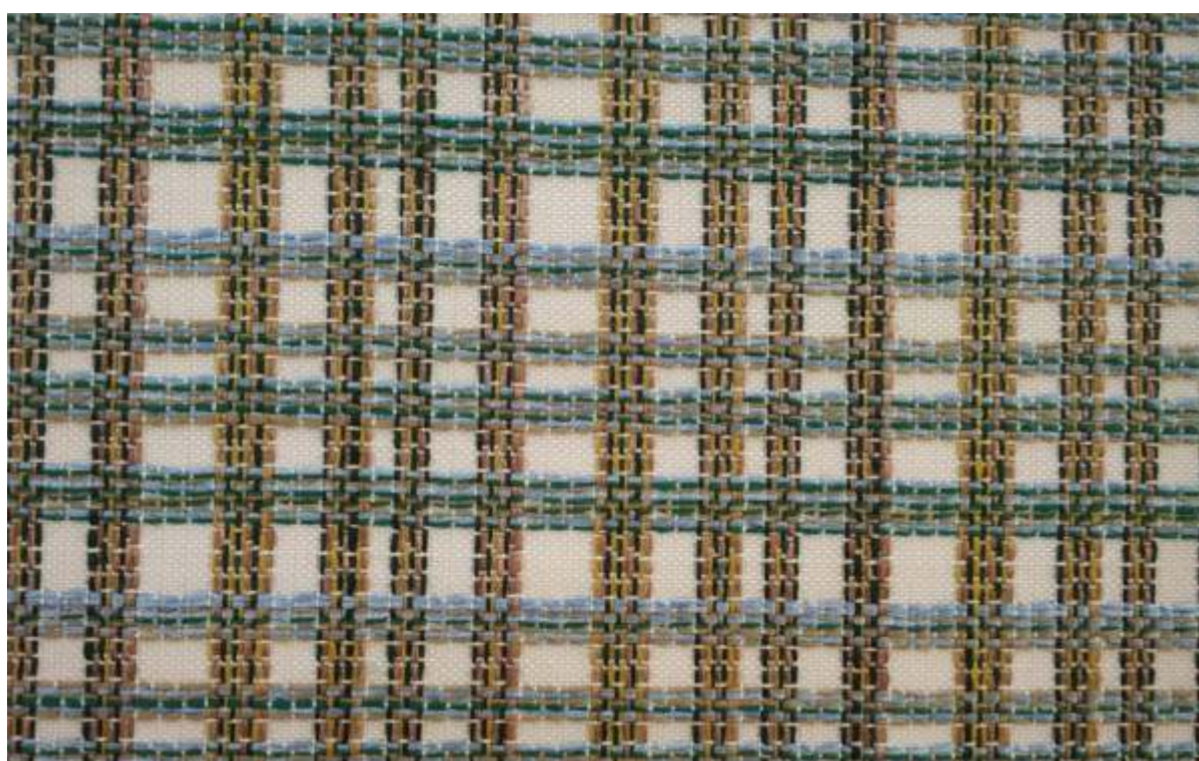


SOFFICE - 921

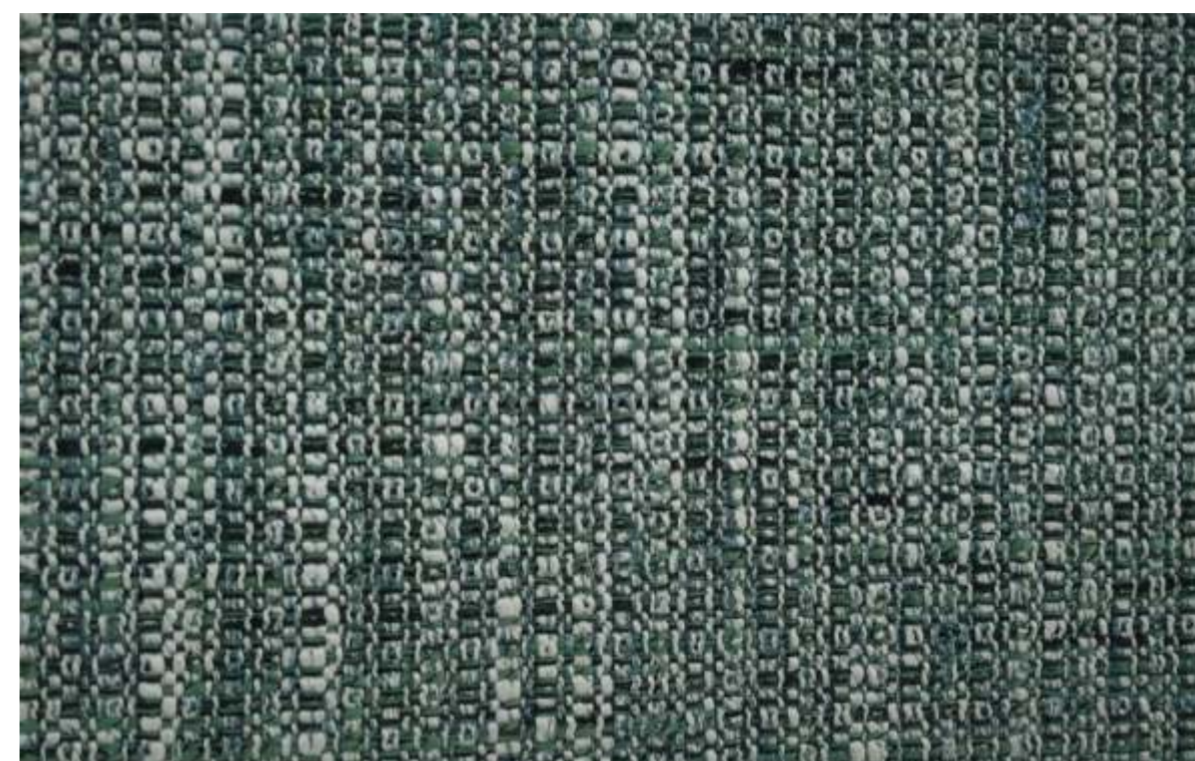


MORJIM - 703





KOVALAM - 105



CHERAI - 704



TIFFANY - 914



SOFFICE - 915



ORLANDO - 109



AROSSIM - 105



TIFFANY - 916



ASABA - 702



EUPHORIA - 707



MORJIM - 704

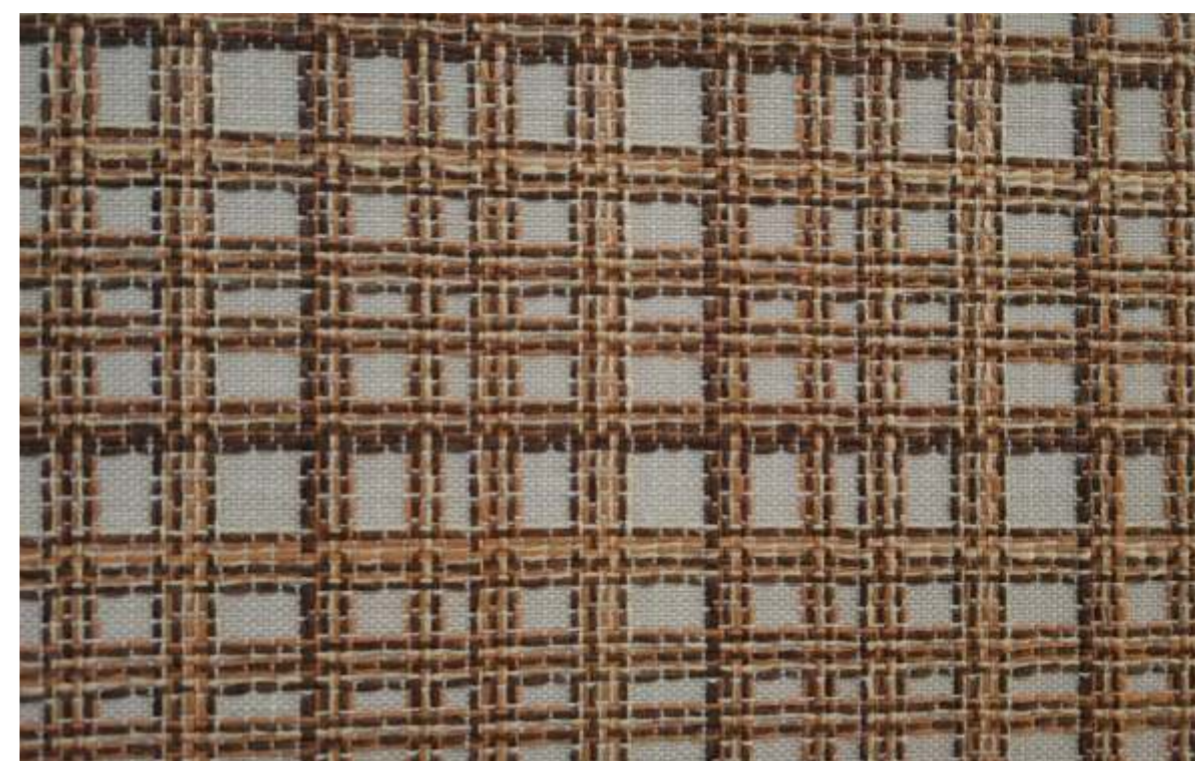


MARINA - 905





CHERAI - 706



KOVALAM - 107



TIFFANY - 907



ORLANDO - 105



LENKA - 706



AROSSIM - 106



TIFFANY - 906



ORLANDO - 104



MARINA - 907





Wash Care Instructions

Wash care instructions need to be followed for prolonged usage of fabric, otherwise will damage the fabric. Test results were gathered from various samples and therefore represent average indicative values. Discolouration caused by clothing fabrics such as jeans does not represent a material defect. Minor colour deviations & discolouring in context of permissible industrial tolerance standards.

DESIGN	WIDTH	GSM	COMPOSITION	VERTICAL REPEAT	HORIZONTAL REPEAT	MARTINDALE	WASHING INSTRUCTION	END USE
*AROSSIM	142 CM	406	100% POLYESTER	NA	NA	42000	☒ ☒ ☒ ☒ ☒ ☒	🛋️ 🛏️
*CHERAI	142 CM	506	100% POLYESTER	NA	NA	100000	☒ ☒ ☒ ☒ ☒ ☒	🛋️ 🛏️
*KOVALAM	142 CM	380	100% POLYESTER	4.20 CM	4.20 CM	52000	☒ ☒ ☒ ☒ ☒ ☒	🛋️ 🛏️
*MARINA	142 CM	436	59%POLYESTER, 37%JUTE 4%POLYAMIDE	0.60 CM	1.60 CM	90000	☒ ☒ ☒ ☒ ☒ ☒	🛋️ 🛏️
*MORJIM	142 CM	690	100% POLYESTER	STRIPE	10.70 CM	100000	☒ ☒ ☒ ☒ ☒ ☒	🛋️ 🛏️
ASABA	140 CM	360	100% POLYESTER	NA	NA	20000	☒ ☒ ☒ ☒ ☒ ☒	🛋️ 🛏️
BRONX	140 CM	440	100% POLYESTER	NA	NA	20000	☒ ☒ ☒ ☒ ☒ ☒	🛋️ 🛏️
TIFFANY	142 CM	480	100% POLYESTER	NA	NA	30000	☒ ☒ ☒ ☒ ☒ ☒	🛋️ 🛏️
EUPHORIA	140 CM	345	100% POLYESTER	NA	NA	20000	☒ ☒ ☒ ☒ ☒ ☒	🛋️ 🛏️
LENKA	140 CM	340	100% POLYESTER	NA	NA	20000	☒ ☒ ☒ ☒ ☒ ☒	🛋️ 🛏️
ORACLE	142 CM	280	100% POLYESTER	NA	NA	20000	☒ ☒ ☒ ☒ ☒ ☒	🛋️ 🛏️
ORLANDO	142 CM	280	100% POLYESTER	NA	NA	20000	☒ ☒ ☒ ☒ ☒ ☒	🛋️ 🛏️
SOFFICE	140 CM	380	100% POLYESTER	NA	NA	25000	☒ ☒ ☒ ☒ ☒ ☒	🛋️ 🛏️

WASHING INSTRUCTION				END USE		Color may vary from batch to batch Complimentary Sample, Not For Sale * Make in India
☒ Don't Wash	☒ Iron 2 Dot	☒ Wash at 40 degree	☒ Hang Dry	🛋️ Upholstery		www.sarom.co.in /saromfab
☒ Don't Bleach	☒ Iron 1 Dot	☒ Dry Clean		🛏️ Cushion		
☒ Don't Tumble	☒ Don't Iron	☒ Vacuum Clean				

Product Color May Slightly Vary From Original Due To Photographic Lighting Sources Or Your Screen Settings.