

s a r o m ™
c o m b i n a t i o n s u n e x p e c t e d



APACHE

sarom
combinations unexpected



APACHE - 901



APACHE - 904



APACHE - 903



APACHE - 905

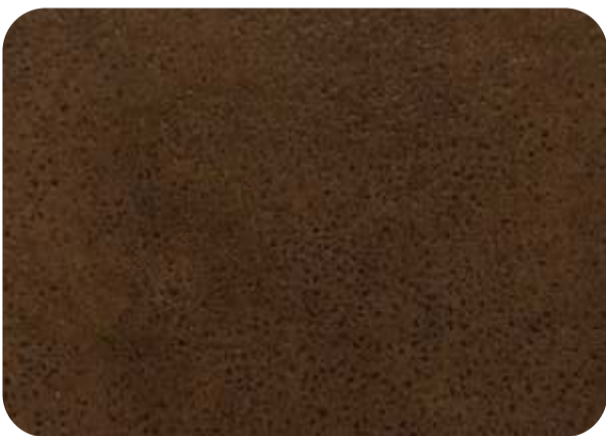


APACHE - 902

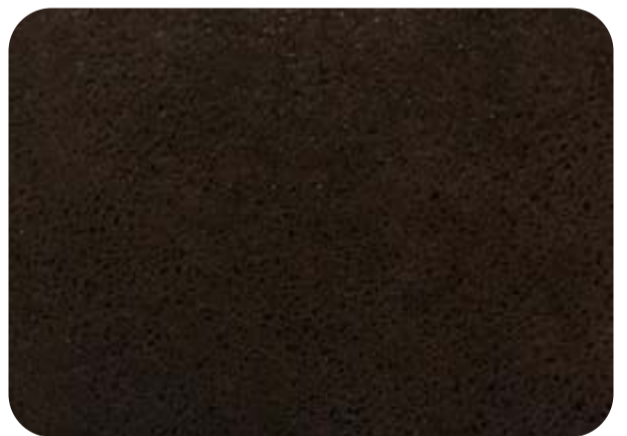
APACHE



APACHE - 907



APACHE - 906



APACHE - 908



APACHE - 911



APACHE - 909



APACHE - 910



APACHE - 913



APACHE - 912



APACHE - 915



APACHE - 914





APACHE - 905

APACHE

Design	Width (In Cms)	Weight	Composition	Tear Strength	Abrasion Resistance	Colour Fastness to Light	Pilling Resistance	Parten Repeat (If any)
APACHE	140±2	450 GSM	100% Polyester	4	More than 20000 Cycles	3.5 More	4	N/A

1. We do not accept responsibility for any damage resulting from inappropriate use, chemical cleaning or additional impregnation.
2. Test results were gathered from various samples and therefore represent average indicative values.
3. Discolouration caused by clothing fabrics such as jenas does not represent a material defect. Minor colour deviations and discolouring in context of permissible industrial tolerance standards do not constitute reasons for claims .

Washing Instructions



Color may vary from batch to batch

Complimentary Sample File Not For Sale

Product Color May Slightly Vary From Original Due To Photographic Lighting Sources Or Your Screen Settings.



s a r o m

combinations unexpected

